

**NEMA 4/12 - ENCLOSURE  
19" RACKMOUNT - 29U HEIGHT  
FREE STANDING**

**54" H x 48" W x 48" D  
4 DOOR DESIGN**



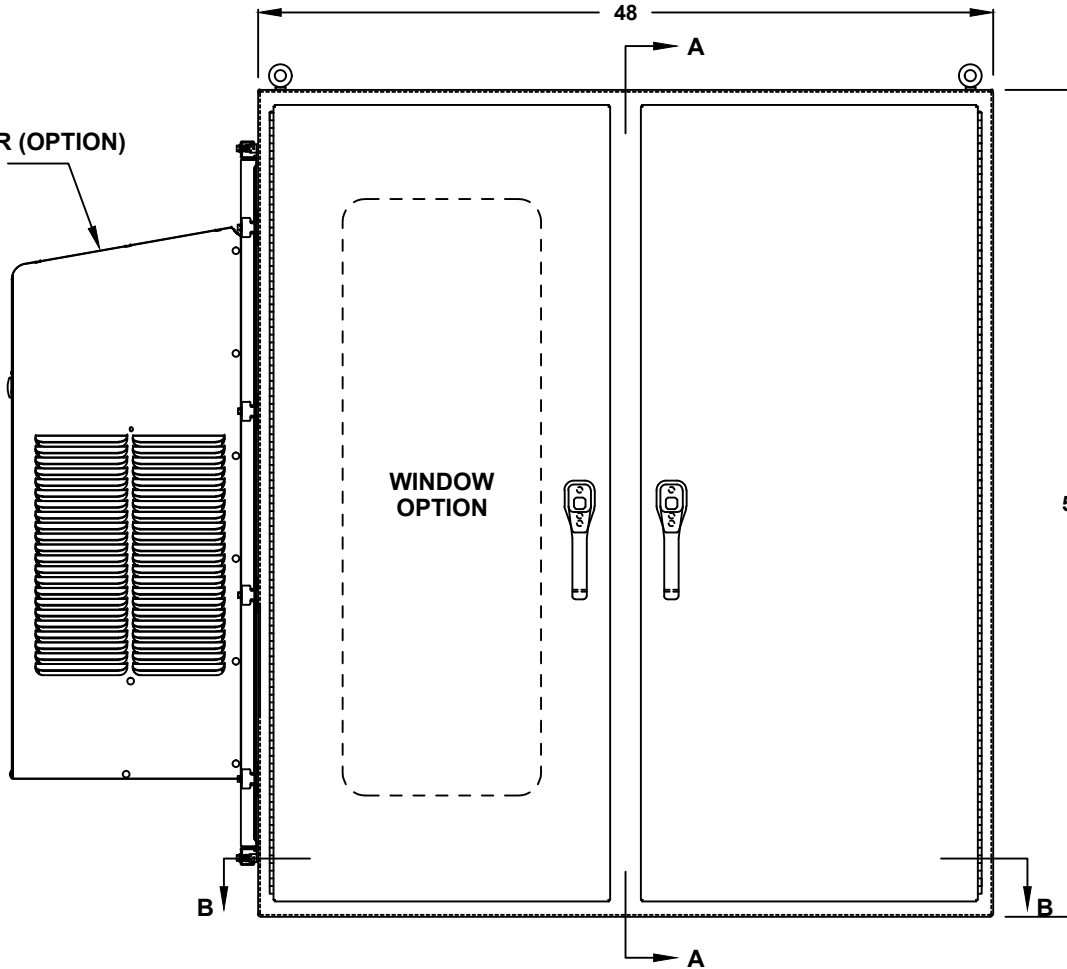
FILE NUMBER: E507642

AIR CONDITIONER (OPTION)  
REF. TO PAGE 2

- ENCLOSURE MATERIAL**
- POWDER COATED STEEL (CS)
  - POWDER COATED ALUMINUM (AL)

- POWDERCOAT COLOR**
- WHITE
  - LIGHT GRAY ANSI 70
  - DARK GRAY ANSI 61
  - BLACK
  - CUSTOM \_\_\_\_\_

- EXTENDED FLOOR DEPTH**
- 2" DEPTH
  - 4" DEPTH
  - 6" DEPTH
  - SPECIFY \_\_\_\_\_



- LIFTING EYES**
- WELDED PADEYES (STANDARD)
  - REMOVABLE PADEYES

- \*WINDOW OPTIONS**
- CLEAR WINDOW
  - TINTED WINDOW
  - TEMPERED GLASS
  - NOT REQUIRED

- DOOR HANDLES**
- PADLOCK PROVISION (STANDARD)
  - KEYLOCK (OPTION)

ALL DIMENSIONS ARE ESTIMATED IN INCHES  
AND MAY VARY DUE TO SELECTED OPTIONS.

\_\_\_\_\_  
COMPANY NAME

\_\_\_\_\_  
APPROVED (PRINTED NAME)

\_\_\_\_\_  
SIGNATURE

\_\_\_\_\_  
DATE

**FRONT VIEW**

\*NOTE: UL & NON-UL OPTIONS  
AVAILABLE

# 54" H x 48" W x 48" D 4 DOOR DESIGN

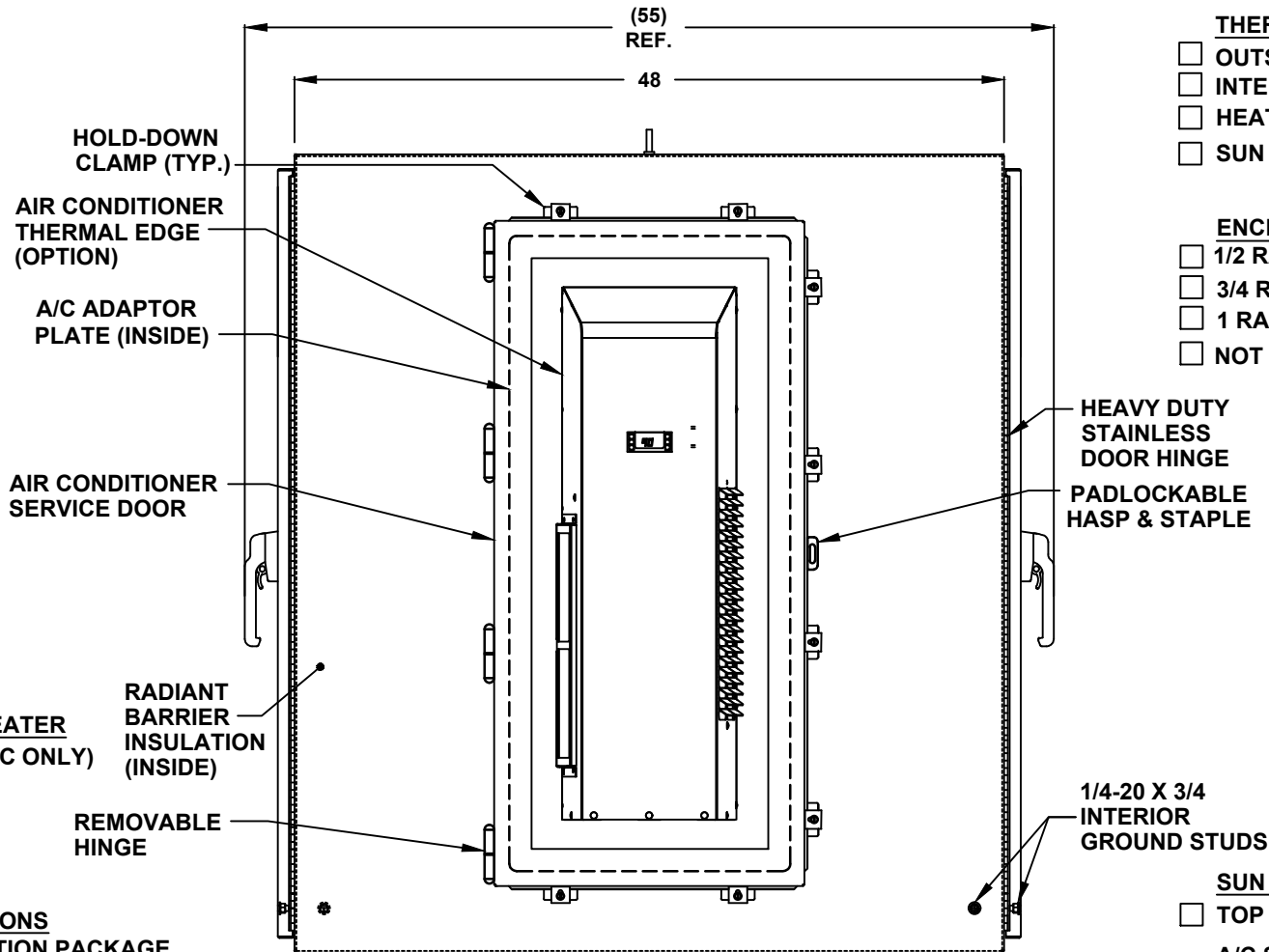
- AIR CONDITIONER**
- 1000 BTU
  - 2000 BTU
  - 3000 BTU
  - 4000 BTU
  - 5000 BTU
  - 6000 BTU
  - 8000 BTU
  - 10000 BTU
  - 12000 BTU
  - 15000 BTU
  - SPECIFY \_\_\_\_\_
  - NOT REQUIRED

- A/C VOLTAGE/ HZ**
- 115 VOLTS
  - 230 VOLTS
  - 480 VOLTS
  - 60 HZ
  - 50 HZ
  - 48 VDC

- A/C INTERGRATED HEATER**
- 350 WATTS (CS011 A/C ONLY)
  - 500 WATTS (C3020)
  - 1000 WATTS
  - EXTERNAL HEATER

- ADDITIONAL A/C OPTIONS**
- CORROSION PROTECTION PACKAGE
  - DRY CONTACT (OUTPUT SIGNAL)
  - 2" DEEP FILTERS
  - PROXIMITY SWITCH (ON/OFF)

- AIR CONDITIONER- SCADA**
- MOBUS RTU 485 (2 WIRE) REMOTE NETWORK ETHERNET CONNECTION
  - MOBUS GATEWAY ADD-ON



LEFT SIDE

- THERMAL SPECIFICATIONS**
- OUTSIDE (AMBIENT) \_\_\_\_\_ °F
  - INTERIOR TEMP. \_\_\_\_\_ °F
  - HEAT LOAD (WATTS) \_\_\_\_\_
  - SUN / SHADE \_\_\_\_\_

- ENCLOSURE INSULATION**
- 1/2 RADIANT BARRIER (STANDARD)
  - 3/4 RADIANT BARRIER
  - 1 RADIANT BARRIER
  - NOT REQUIRED

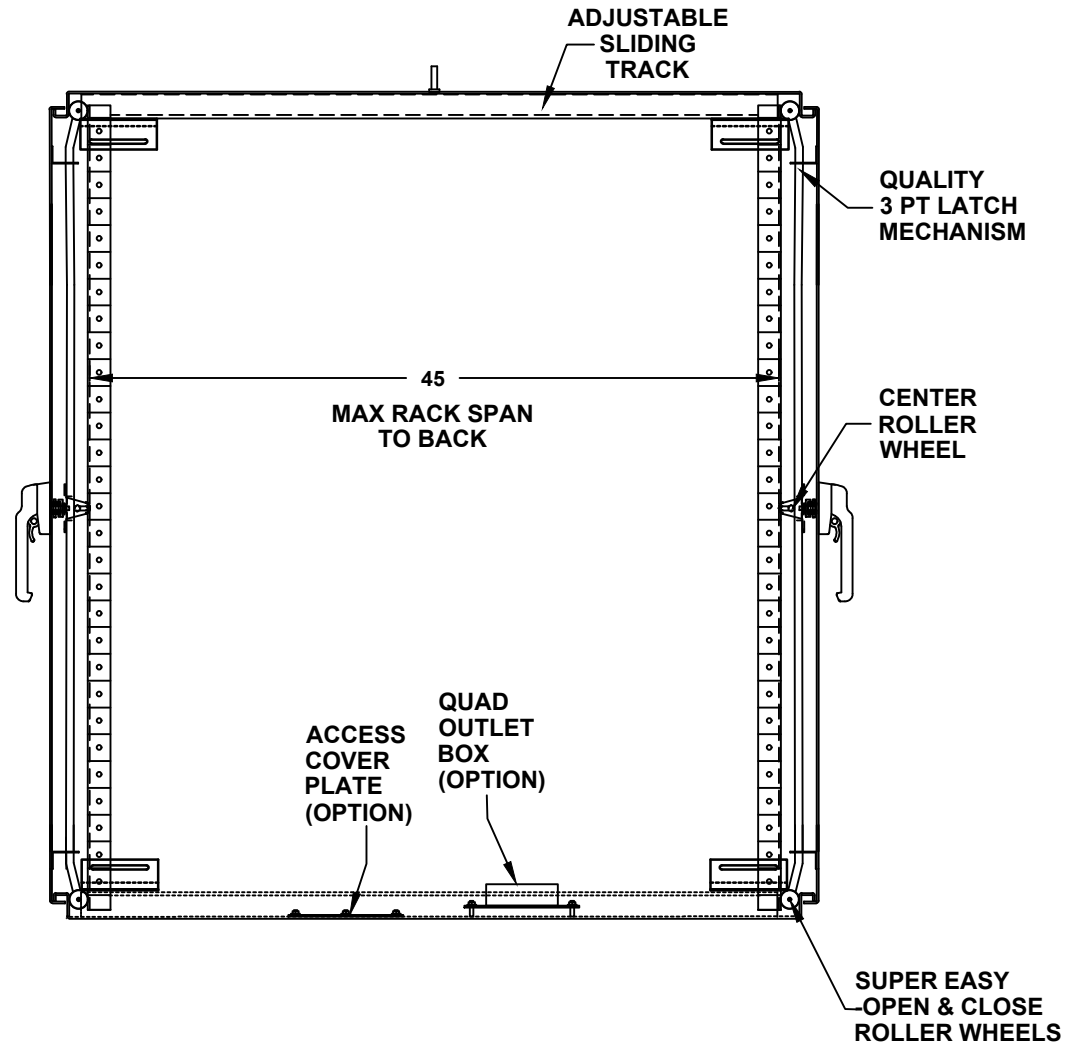
- SUN REFLECTIVE SOLUTION**
- TOP SUNSHIELD COVER

- A/C SERVICE DOOR**
- INSTALL A/C SERVICE DOOR
  - NOT REQUIRED

- A/C SERVICE DOOR HINGE**
- REMOVABLE HINGE
  - CONTINUOUS HINGE

- A/C ADAPTOR PLATE**
- INSTALL A/C ADAPTOR PLATE
  - NOT REQUIRED

# 54" H x 48" W x 48" D 4 DOOR DESIGN

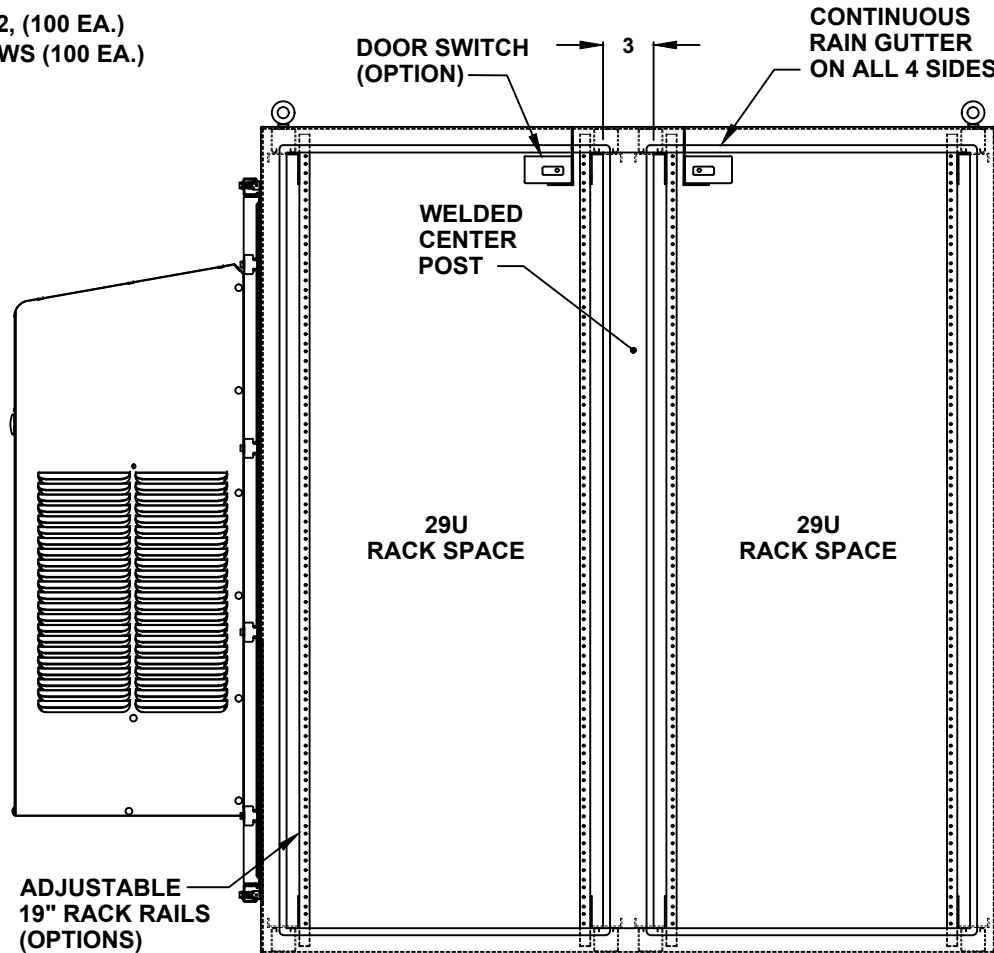


CROSS SECTION VIEW A-A

# 54" H x 48" W x 48" D 4 DOOR DESIGN

**RACK RAIL OPTIONS**

- BLACK CLIP NUTS, #10-32, (100 EA.)
- #10/32 HIGH POINT SCREWS (100 EA.)
- M6 CAGE NUTS



**DOOR OPTIONS**

- DOOR SWITCH
- ELECTROMAGNETIC LOCK
- PRINT POCKET

**CENTER POST**

- WELDED (STANDARD)
- REMOVEABLE

**RACK RAIL POST**

- QTY 4 POST
- QTY 8 POST (REARDOOR REQUIRED)

**RACK RAIL MATERIAL**

- POWDER COATED STEEL (STANDARD)
- 304 STAINLESS STEEL

**RACK RAIL MOUNTING HOLES**

- #10-32 TAP (STANDARD)
- #1/4-20 TAP
- 3/8 SQUARE

**RACK RAIL TYPE**

- STANDARD GRADE
- HEAVY DUTY RAILS (OPTION)

**RACK SHELVES (OPTION)**

- STANDARD RACK SHELVES
- SLIDING RACK SHELVES
- RACK SHELF SUPPORT

**RACK DRAWERS (OPTION)**

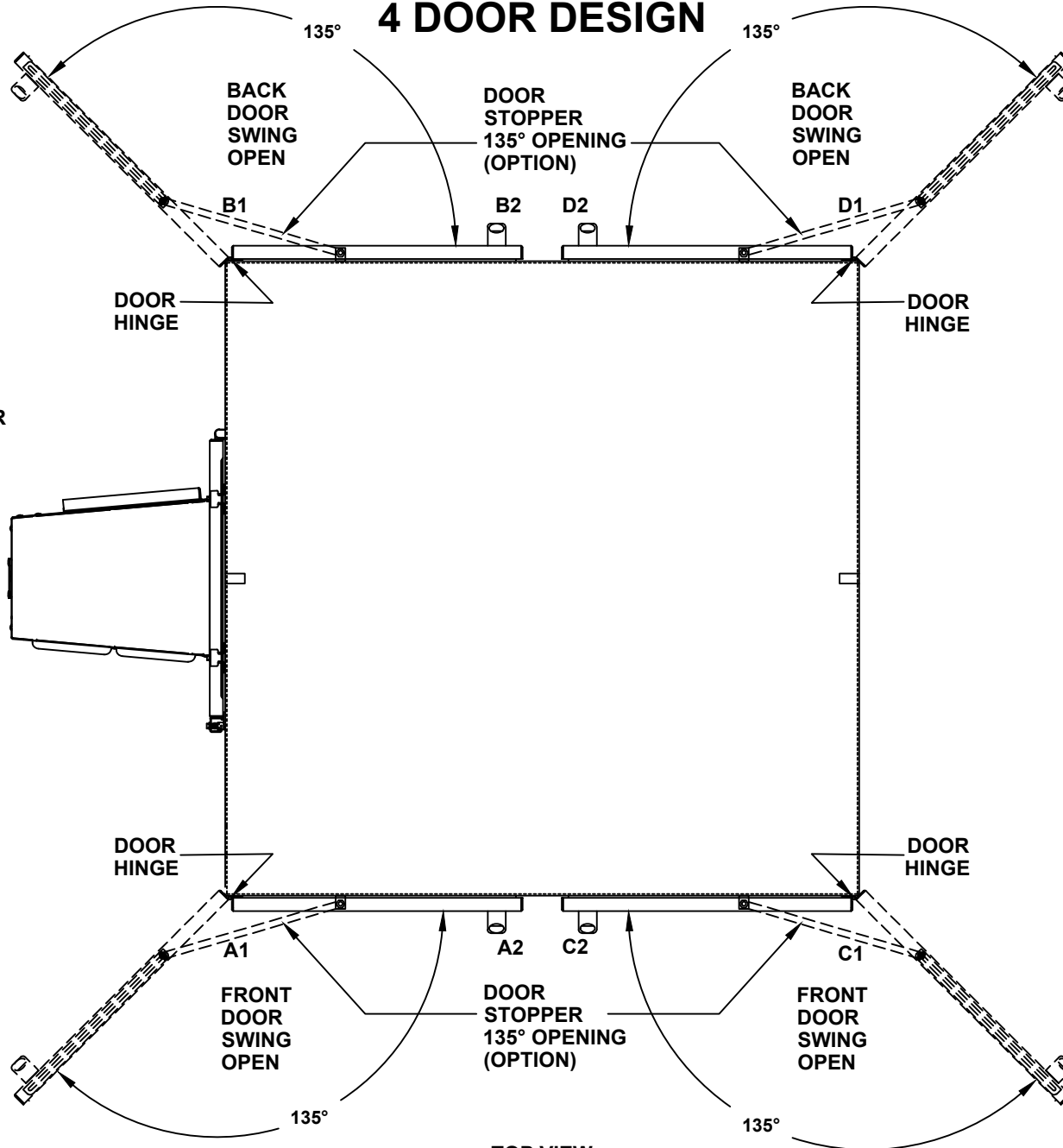
- RACK DRAWERS
- LAPTOP DRAWERS

**OTHER OPTIONS**

- 19" RACK COPPER BUSBAR
- VERTICAL RACK PDU

**FRONT VIEW WITH DOOR REMOVED**

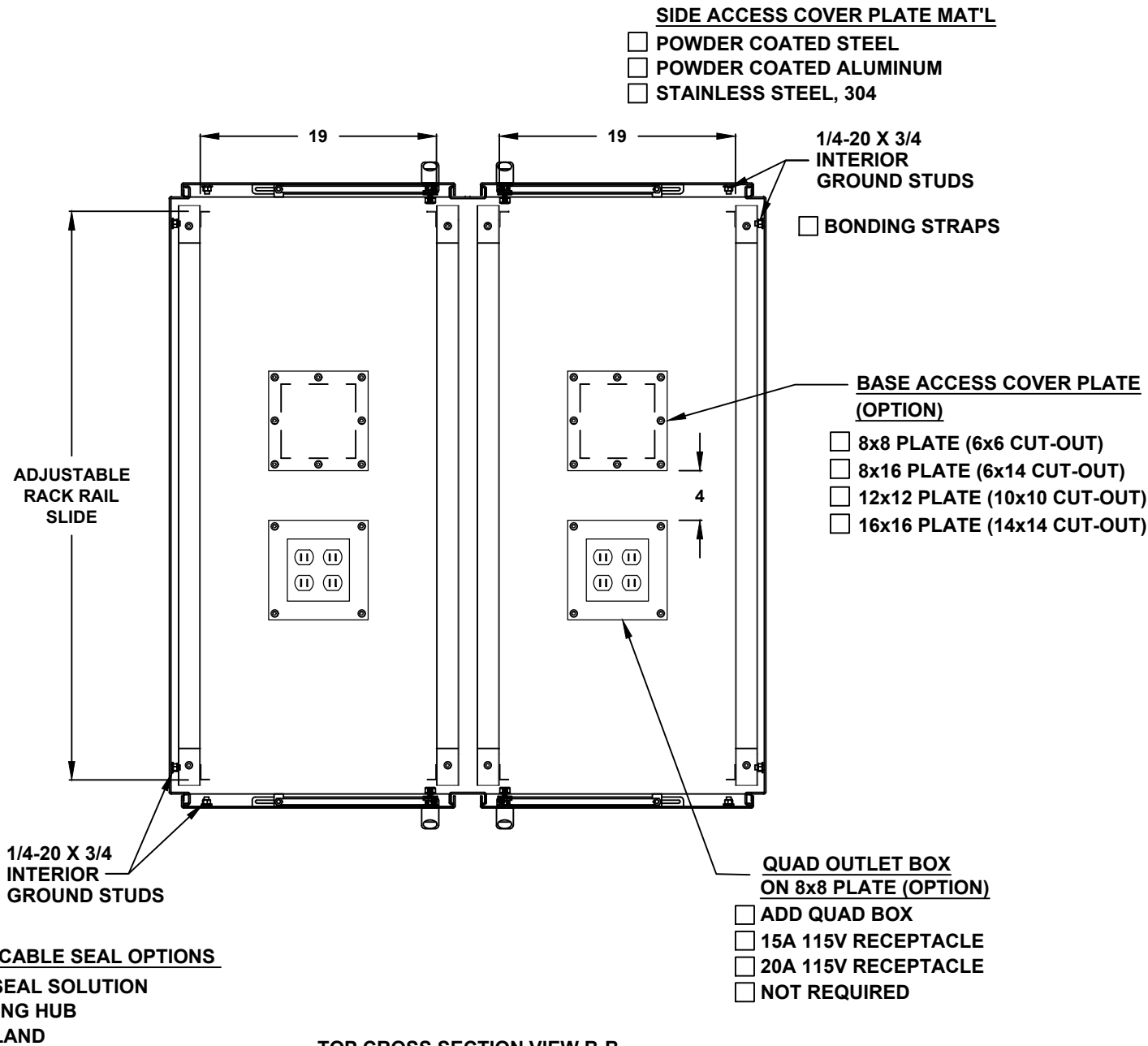
# 54" H x 48" W x 48" D 4 DOOR DESIGN



- DOOR STOPPER**
- INSTALL DOOR STOPPER
  - NOT REQUIRED

TOP VIEW

# 54" H x 48" W x 48" D 4 DOOR DESIGN



TOP CROSS SECTION VIEW B-B